

AFTER RECORDING RETURN TO:  
Drysdale, McLean, Guza & Willett, PLLP  
2066 Stadium Drive, Suite 101  
Bozeman, MT 59715

COPY

**NINTH AMENDMENT TO DECLARATION  
FOR  
FIRELIGHT MEADOWS CONDOMINIUMS**

Comes now, Firelight Meadows, L.L.C., the Declarant, and amends the Declaration for Firelight Meadows Condominiums (Declaration) dated the 27th day of February, 2002, and recorded on the 7th day of March, 2002, as Document No. 2062676, records of the Clerk and Recorder of Gallatin County, Montana, as follows:

The intention of this Amendment is to add an Amended Site Plan showing the approximate location of the Daycare/Learning Center (Unit CB) and the approximate location of the road thereto; and to clarify rights of ingress and egress through the general common elements and areas for the Administrative Building (Unit AB) and the Daycare/Learning Center as set forth in Paragraph IV(6) Declarant's Special Rights in the Declaration for Firelight Meadows Condominiums.

Exhibit B5.1 The Amended Site Plan Daycare/Learning Center (Unit CB) is attached hereto and included, added and made a part of the said Declaration for Firelight Meadows Condominiums.

The Administrative Building (Unit AB) and the Daycare/Learning Center (Unit CB) shall have an appurtenant right of ingress and egress over, on and across the roads, and other general common elements of Firelight Meadows Condominiums, for access to the respective properties and units, including road purposes and utilities. This right shall not be affected by whether or not the Units have alternate access.

The Declarant continues to reserve the right to amend the site plan for Unit CB and the location of the road.

Except as set forth above, the Declaration and By-Laws, and all amendments thereto, for Firelight Meadows Condominiums shall remain in full force and effect and are incorporated herein by this reference as though fully set forth as amended.

SCANNED

2/23/06

PAGE - 1

K:\CLIENT\FIRELIGHT MEADOWS\NINTH AMENDMENT - ACCESS.wpd



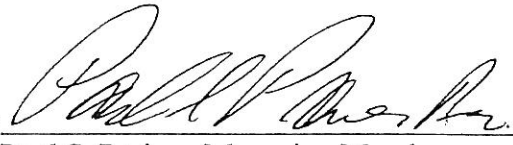
**2203688**

Page: 1 of 3  
09/30/2005 10:00A

Shelley Vance-Gallatin Co MT MISC

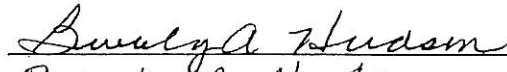
21.00

FIRELIGHT MEADOWS, L.L.C., Declarant

By:   
Paul S. Pariser, Managing Member

STATE OF MONTANA     )  
                                          :SS  
County of Gallatin     )

This instrument was acknowledged before me on the 15 day of September, 2005, by Paul S. Pariser as Managing Member of Firelight Meadows, L.L.C.

  
Beverly A. Hudson  
Printed Name of Notary  
NOTARY PUBLIC for State of Montana  
Residing at Manhattan, Montana  
My Commission expires 9-13-2009

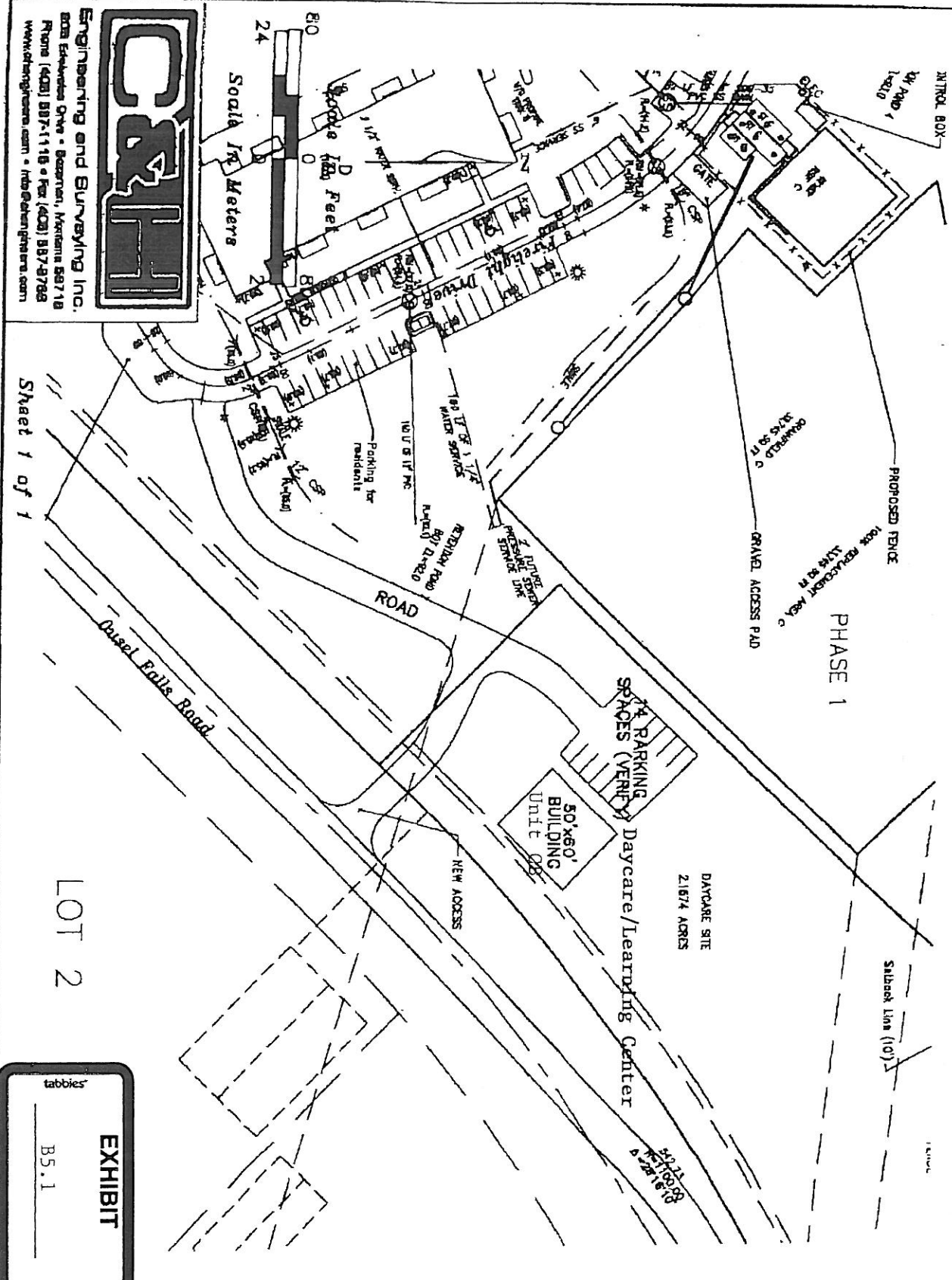
(Notary Public)



**2203688**

Page: 2 of 3  
09/30/2005 10:00A

AMENDED SITE PLAN FOR DAYCARE/LEARNING CENTER UNIT CB AT FIRELIGHT MEADOWS CONDOMINIUMS



**C&H**  
 Engineering and Surveying Inc.  
 8034 Edgewater Drive • Beaverton, Oregon 97008  
 Phone (503) 887-1116 • Fax (503) 887-9788  
 www.candhsurvey.com • info@candhsurvey.com

Sheet 1 of 1

LOT 2

tabbics

**EXHIBIT**

B5.1